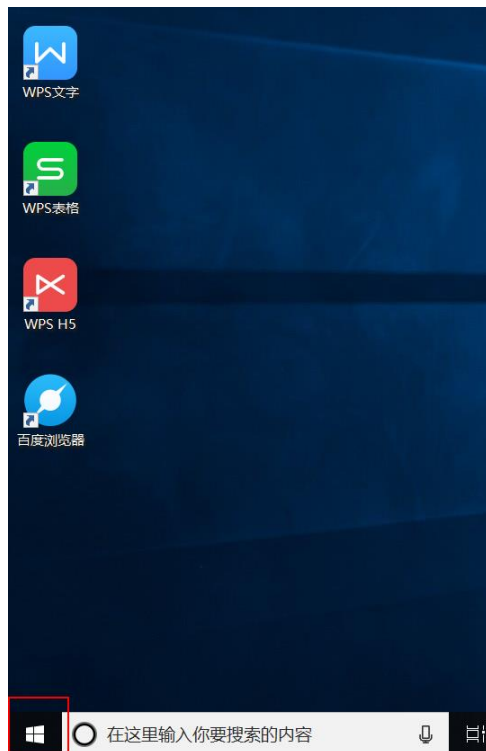


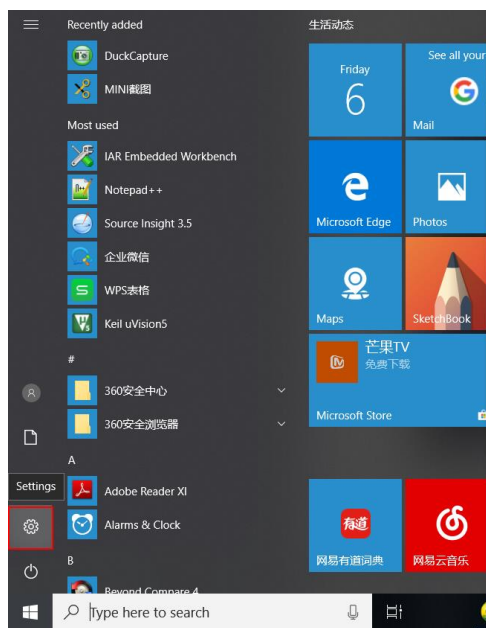
## Installation instruction for JLR\_IMMO driver

Here are the operation steps for [Lonsodr JLR IMMO key tool](#) driver Installation on WIN 10 computer system.

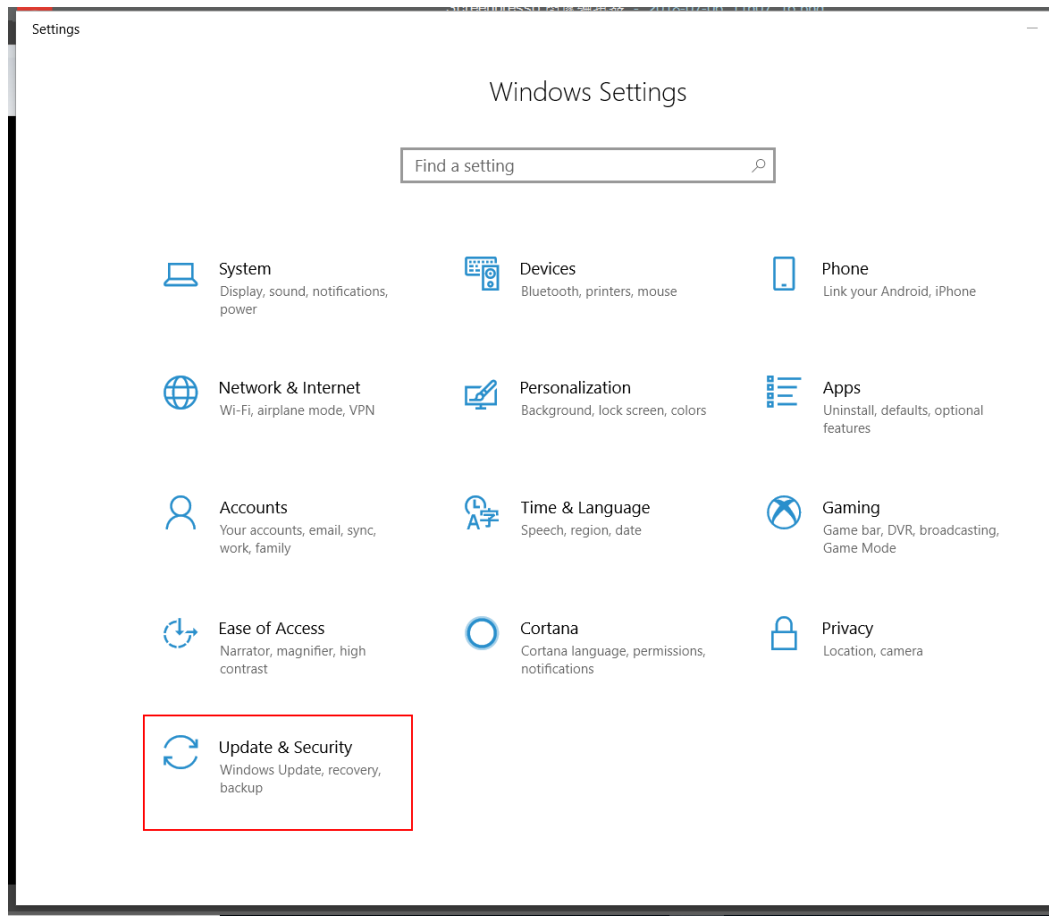
1. Click bottom left button (in below red box) on desktop.



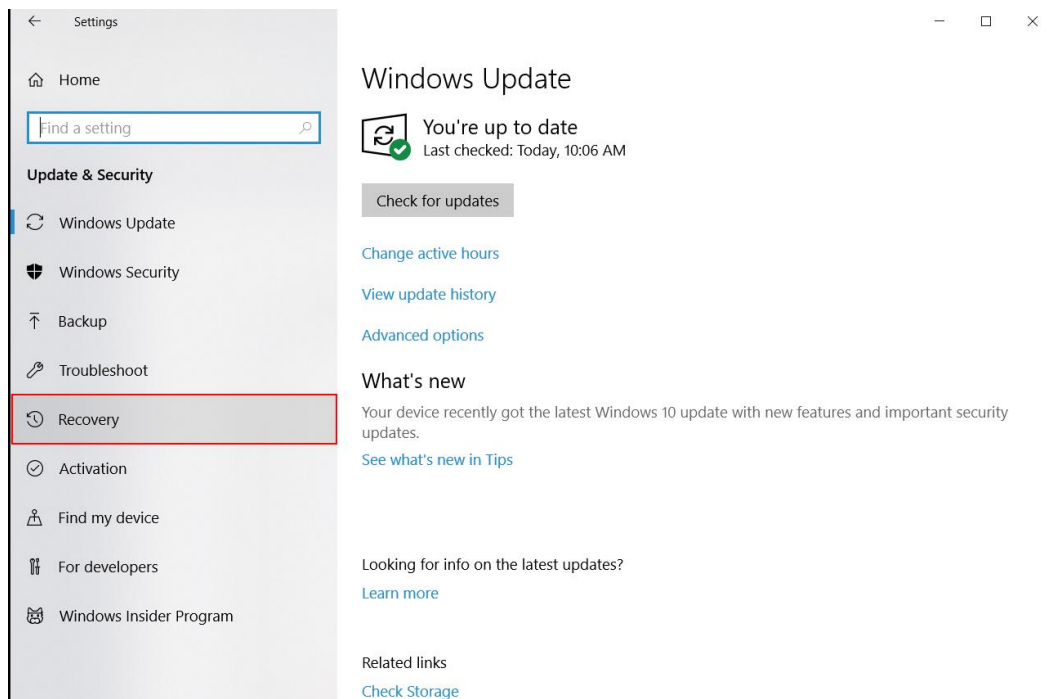
2. It pops up below window, click “Settings” icon.



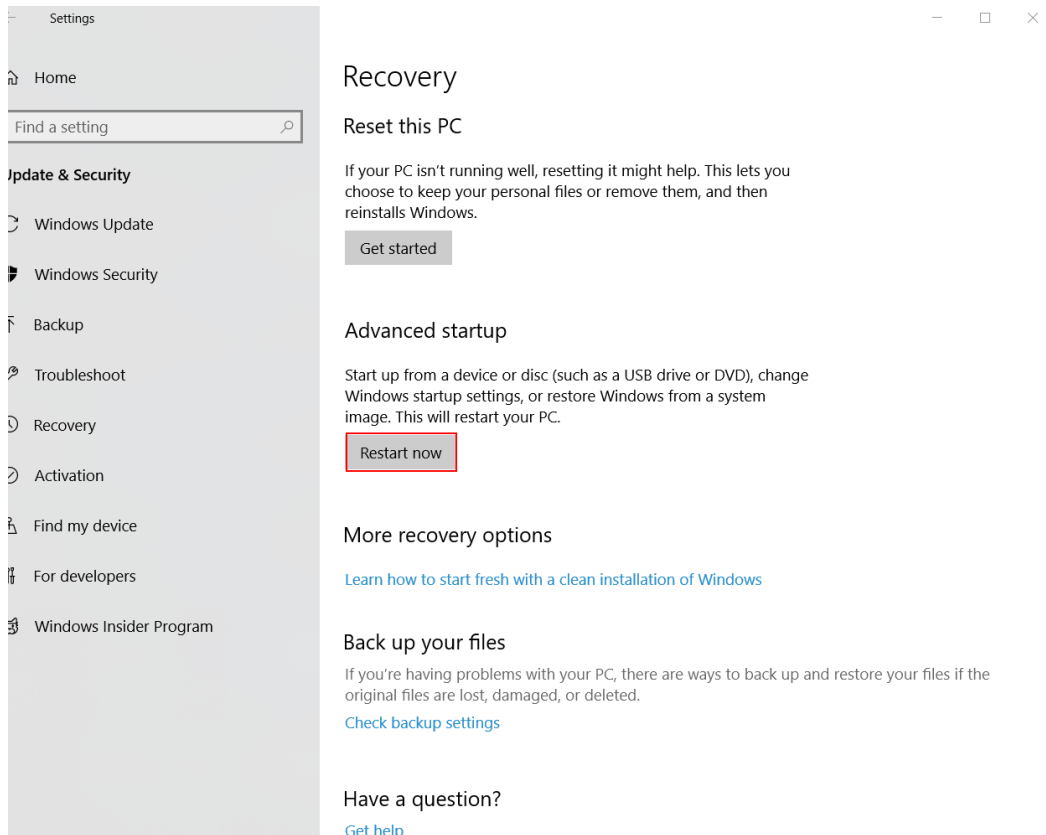
3. Then click **“Update & Security”** button (see below red box).



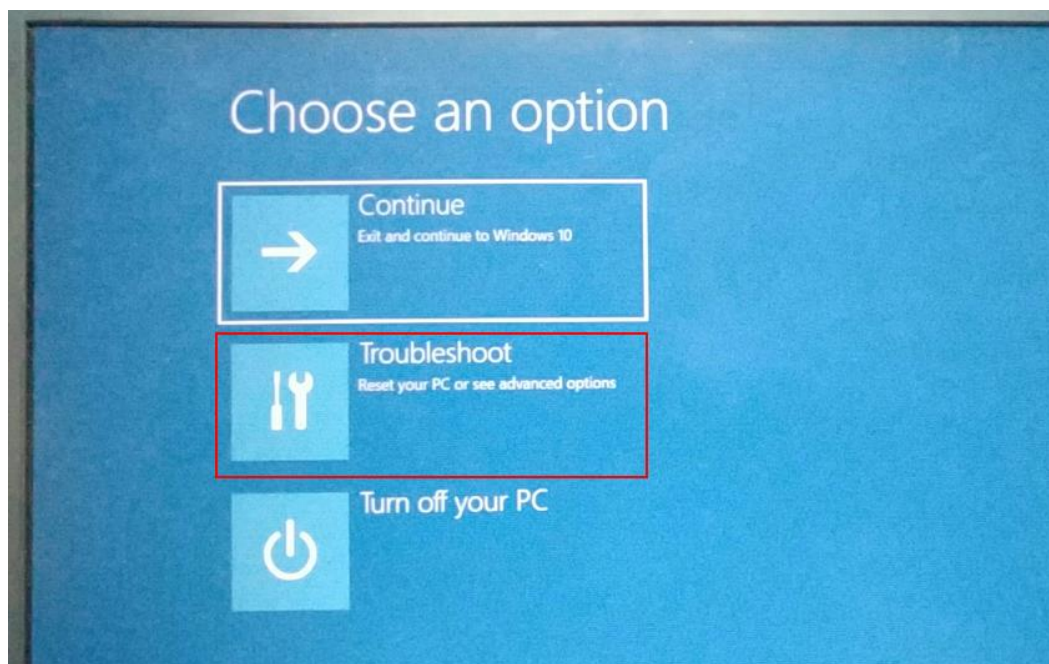
4. It skips to below window, click **“Recovery”** option.



5. Click **“Restart now”** button.



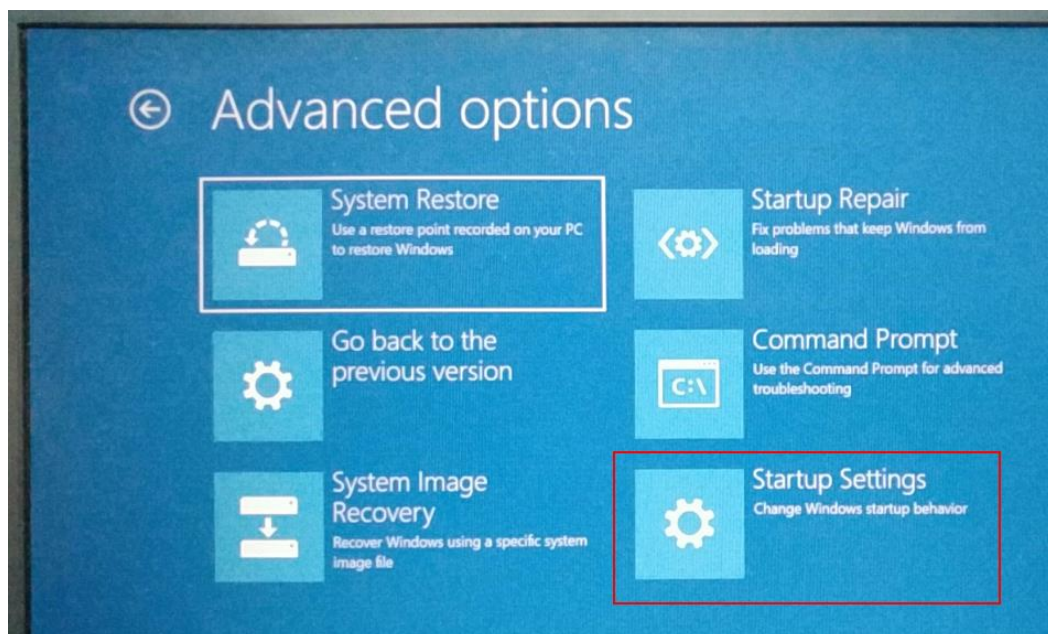
6. Then click **“Troubleshoot”** button.



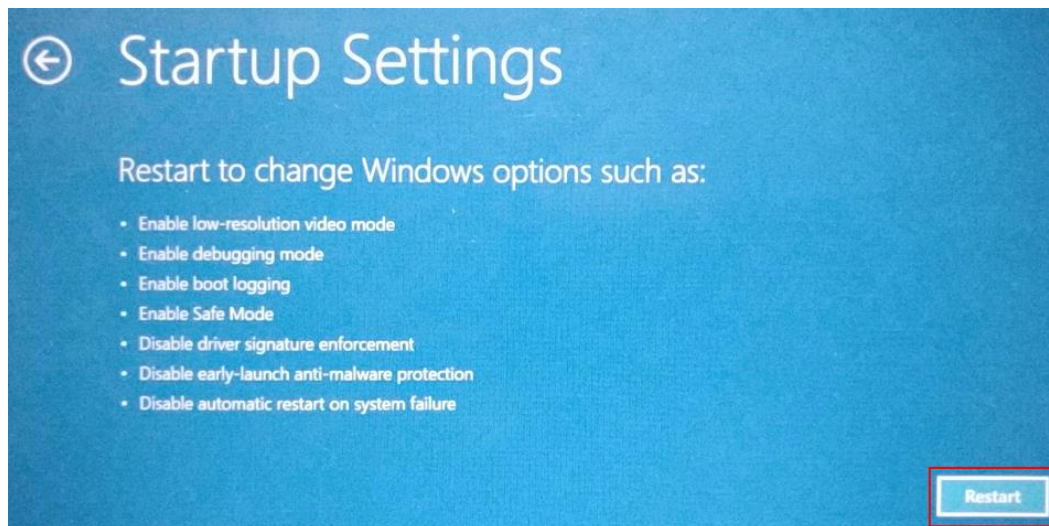
7. When it pops up below window, click **“Advanced options”**.



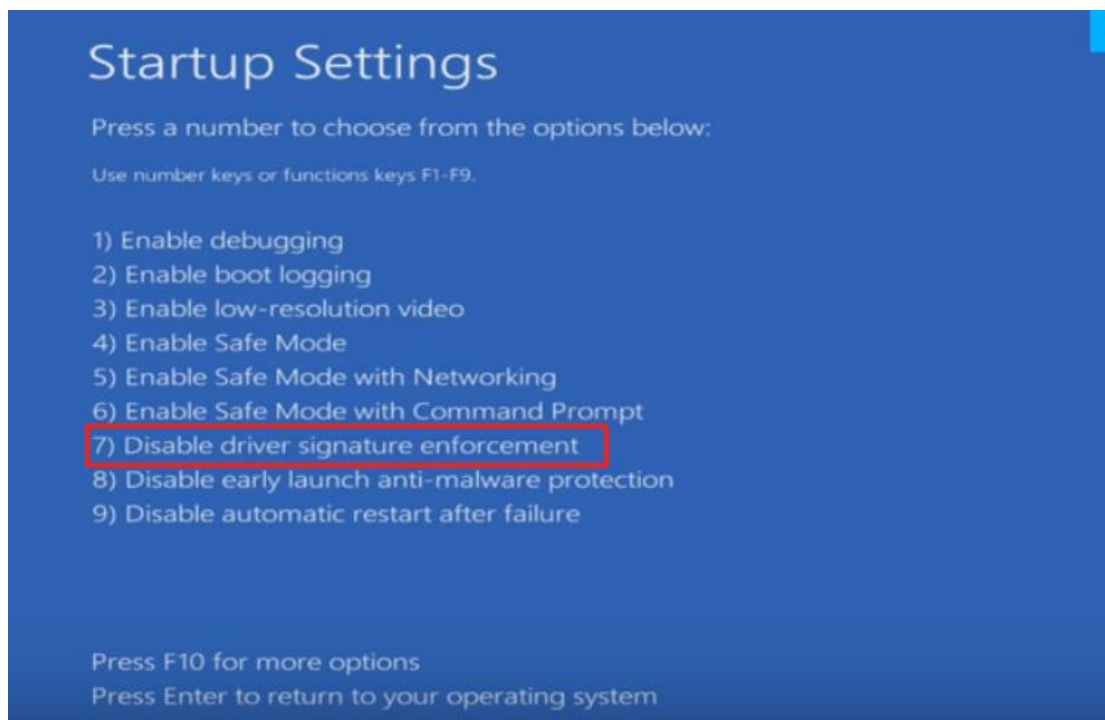
8. Click **“Startup Settings”**.



9. Click **“Restart”** button.



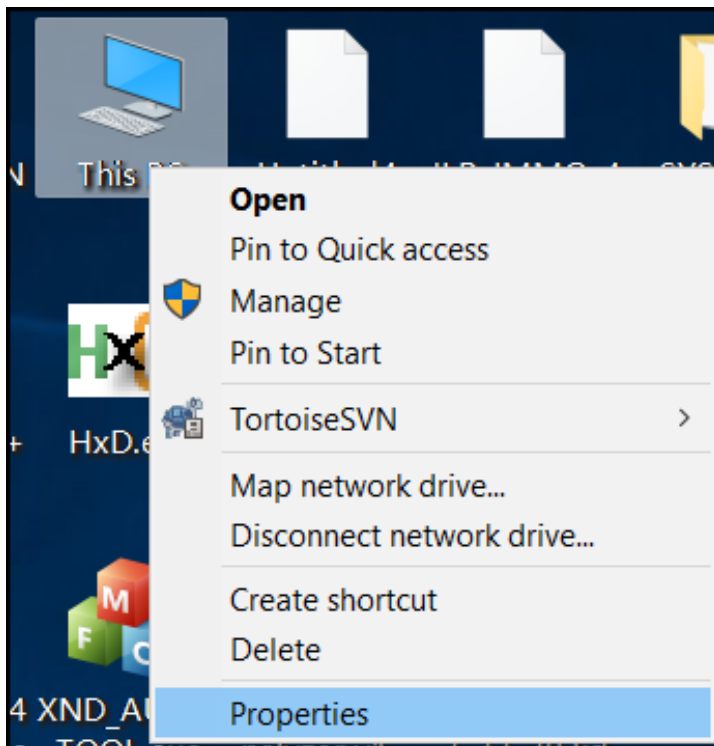
10. Input F7 on keypad to select: **7) Disable driver signature enforcement**



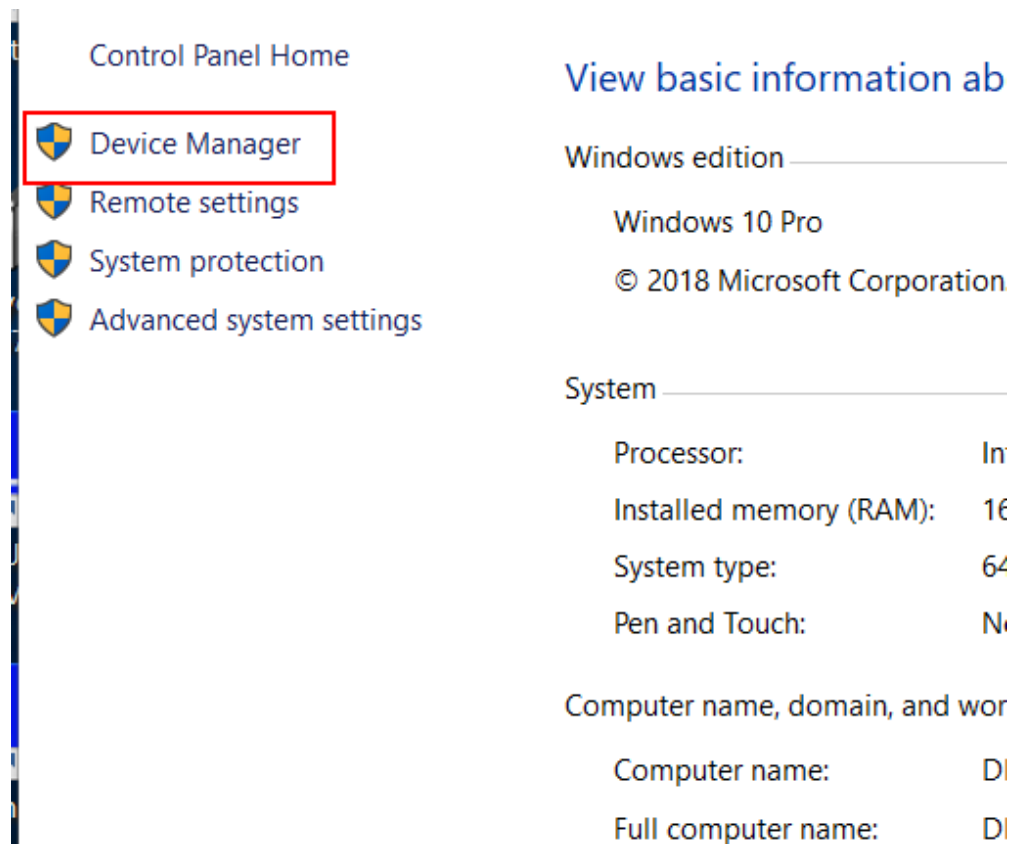
11. Connect the device to computer with USB cable.



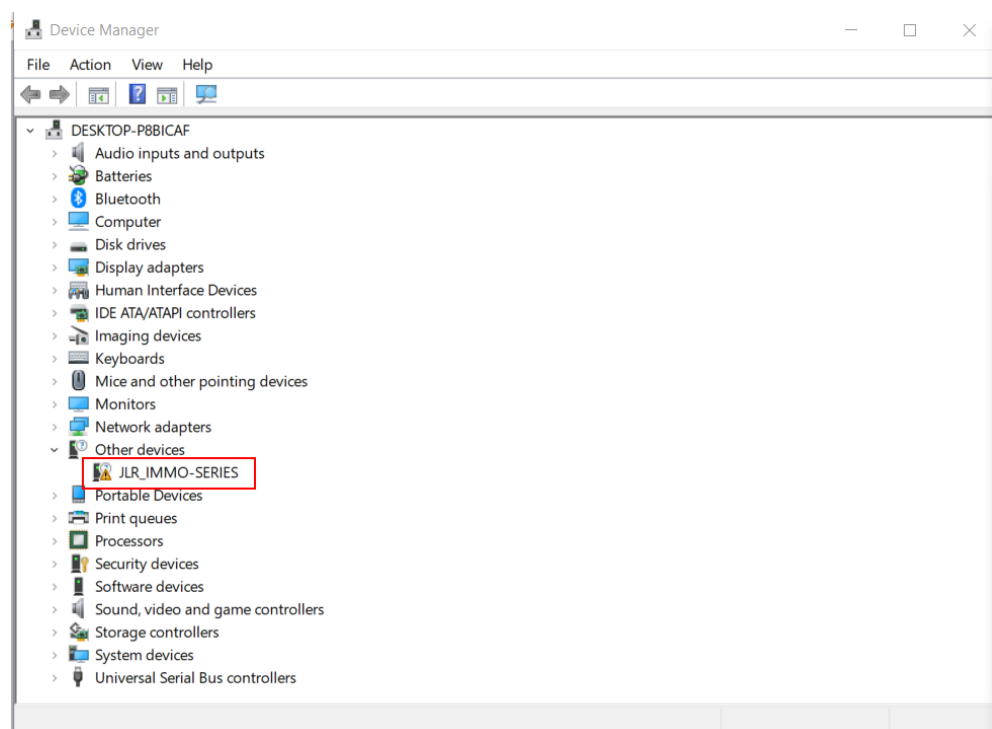
12. Right click **"This PC"**, it pops up below menu. Click **"Properties"**.



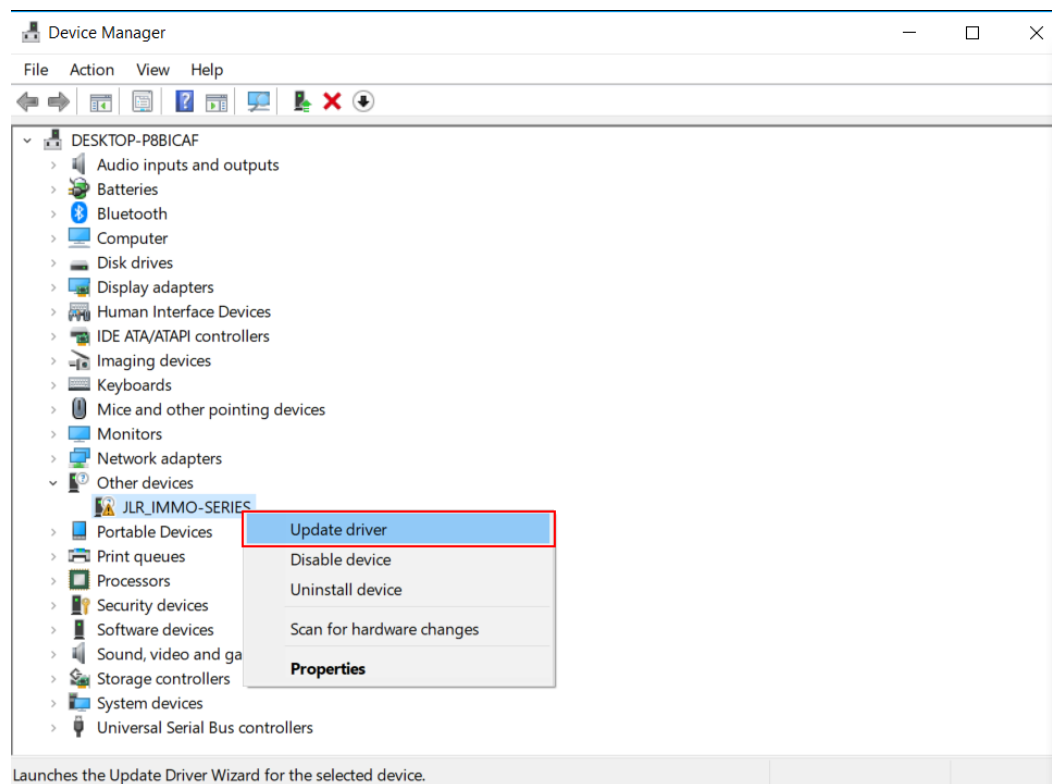
13. Click “Device Manager”(marked in red box).



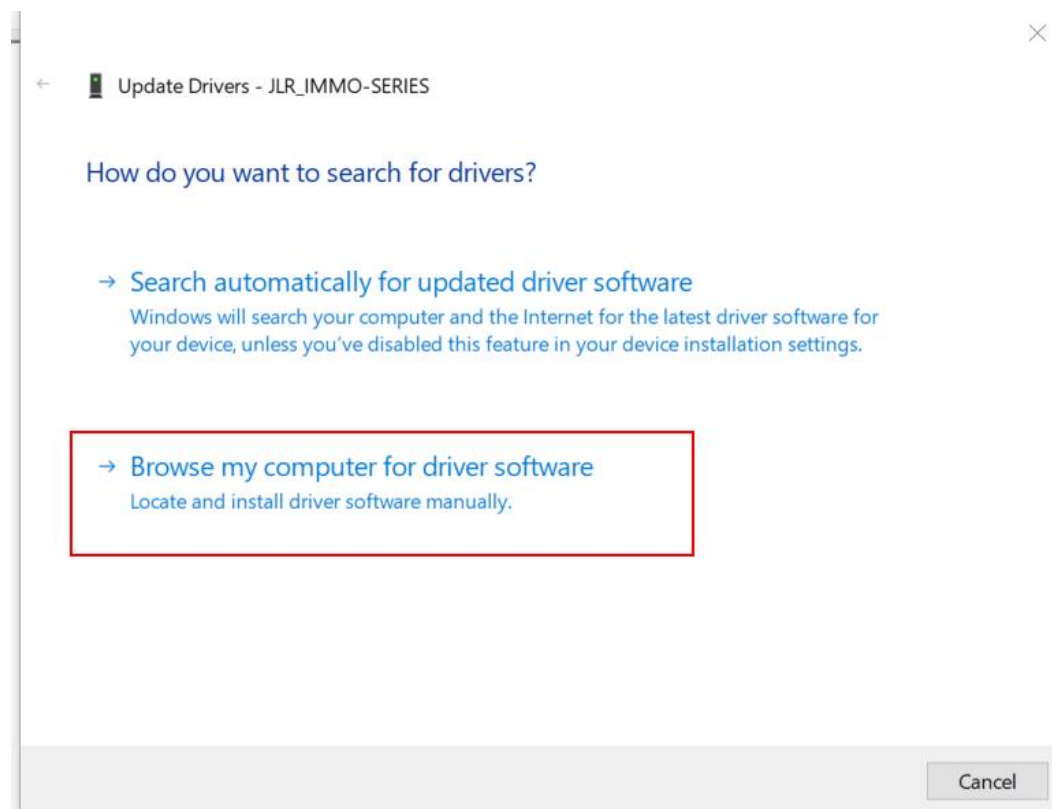
14. You will see a pop-up window as below. Click “Other devices”, “JLR\_IMMO-SERIES” device shows here(marked in red box).



15. Then right click “JLR\_IMMO-SERIES” device, it pops up the following menu.

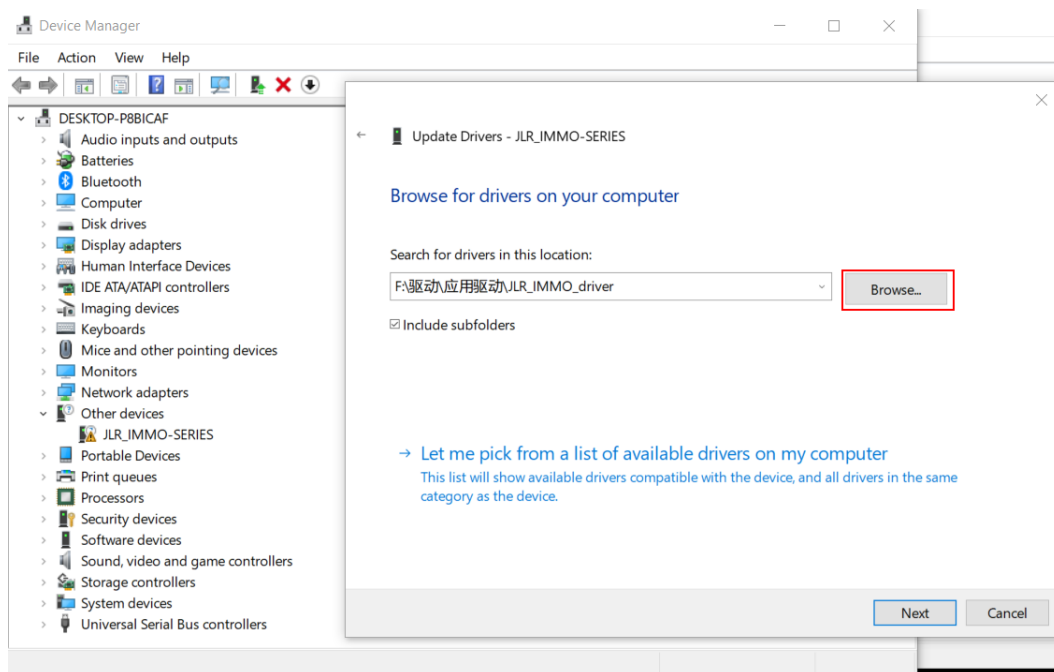


16. Click “Update driver” , it skips to below interface.

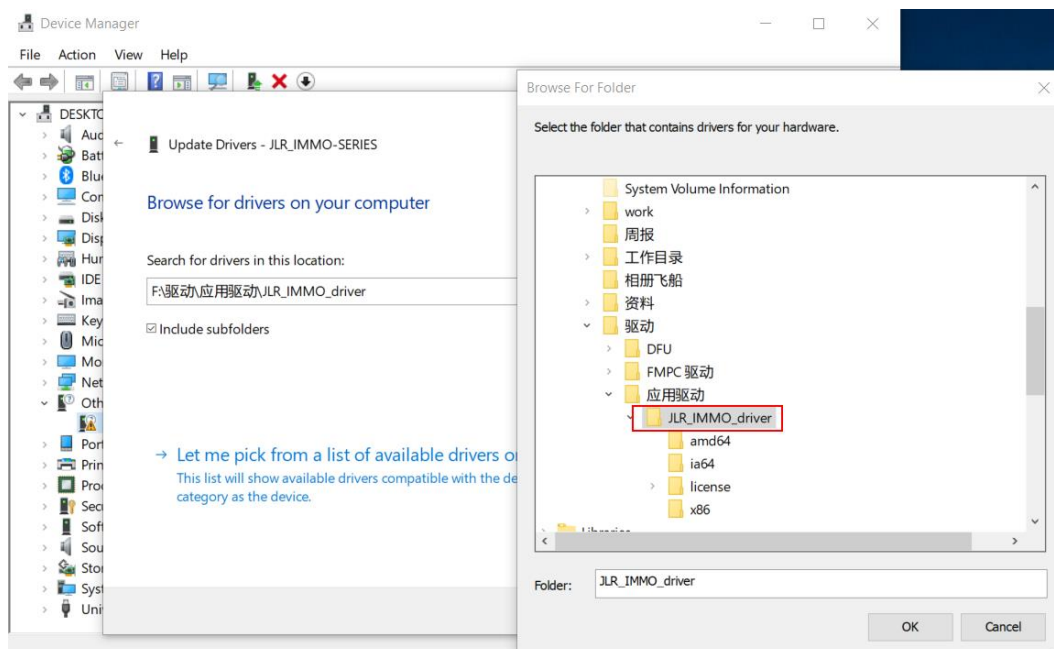




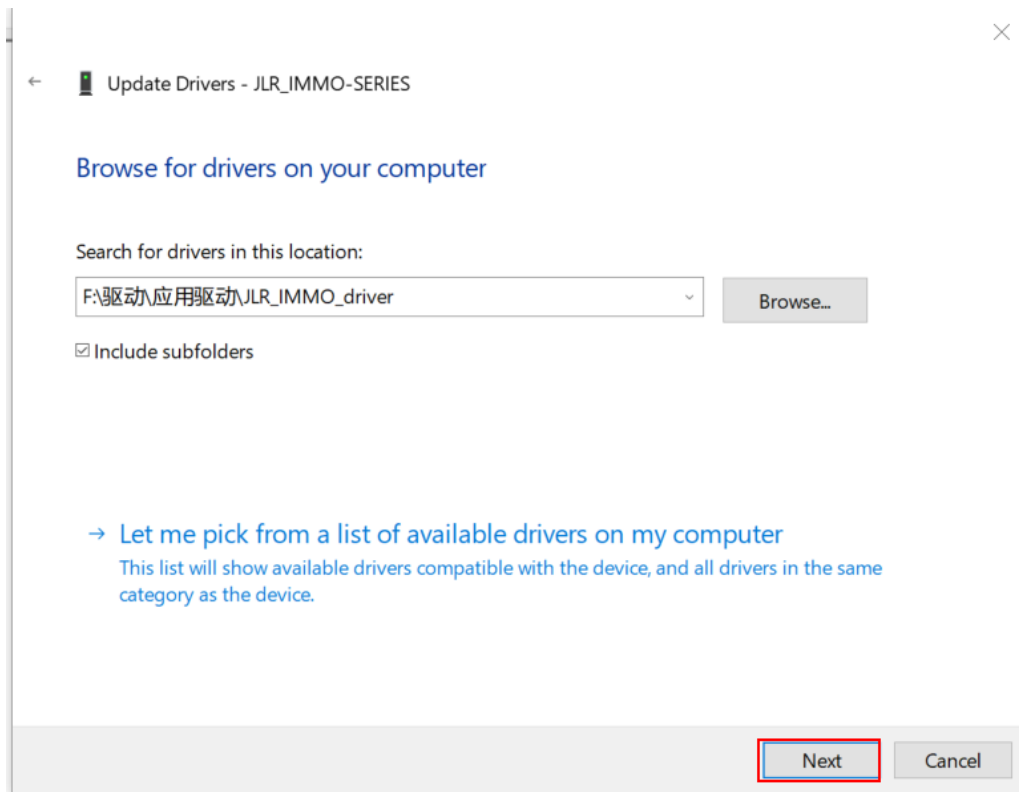
17. Click **“Browse my computer for driver software”** to search and install driver software manually. Then it skips to below interface.



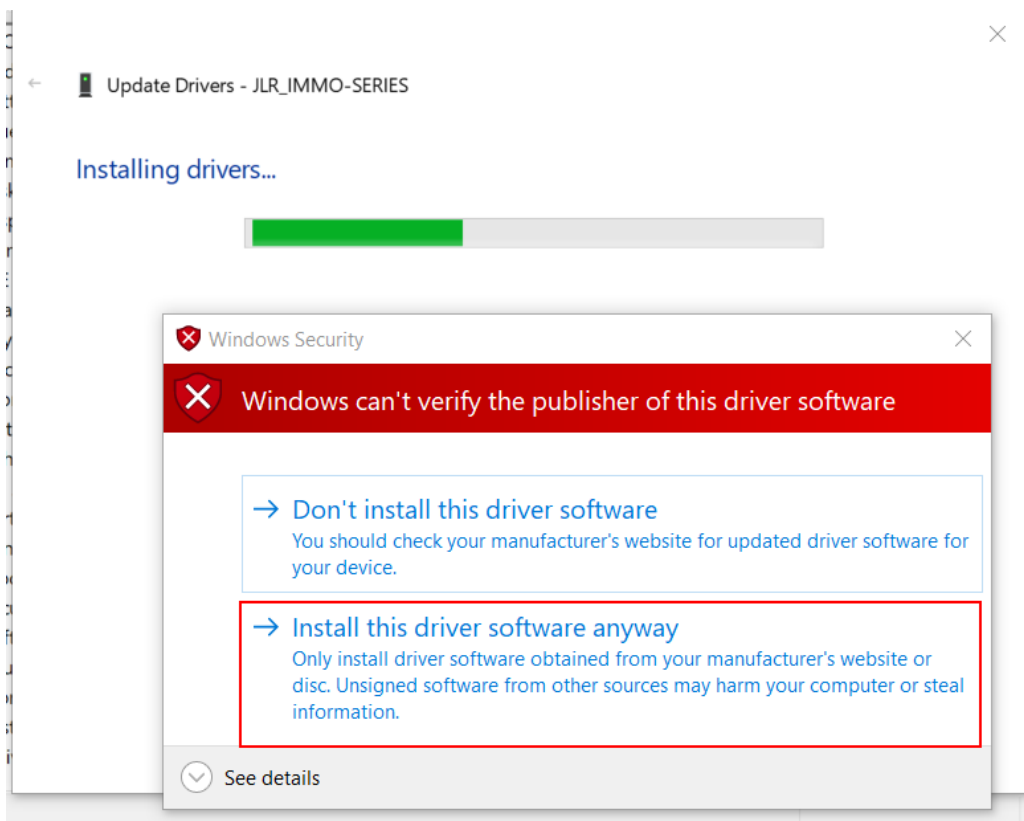
18. Click above **“Browse”** button to locate downloaded driver directory, then click **“OK”** to confirm.



19. It skips to below interface, click **“Next”**. Installation succeeds.



20. When it pops up below window during installation, click **“Install this driver software anyway”**.



21. When it pops up below window, it means installation succeeds. Click **“Close” button**.

